

# LED Blackboard Light

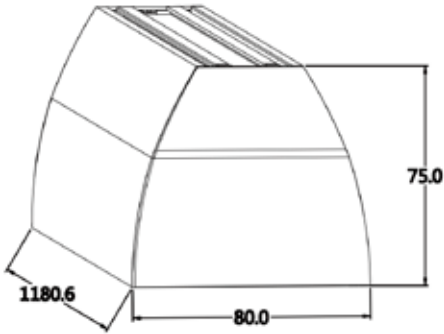


## Product Spec:

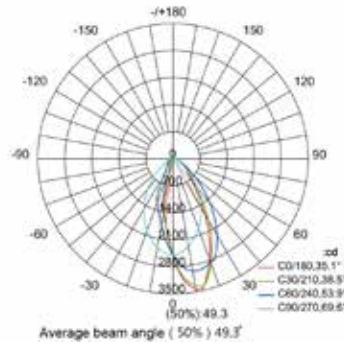
Product Code	Dimension L*W*H [mm]	Power [W]	Input Voltage [V]	Efficiency [lm/W]	Color Temp[K]	CRI	Beam Angle	UGR	LED Chip	Drive
AL-Blackboard-6063	1180.6*80*75mm	40W	AC100-240V	85-90LM/W	5000K	>90	20°/lens	UGR<18	SMD2835	TUV Approved



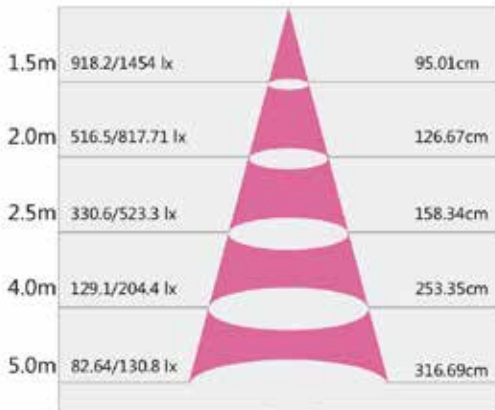
## ■ Dimension(mm):



## ■ Luminous Intensity Distribution:



## ■ Beam Angle:



Height: Eavg/Emax

Beam Angle :35.14°

## ■ Installation Accessories



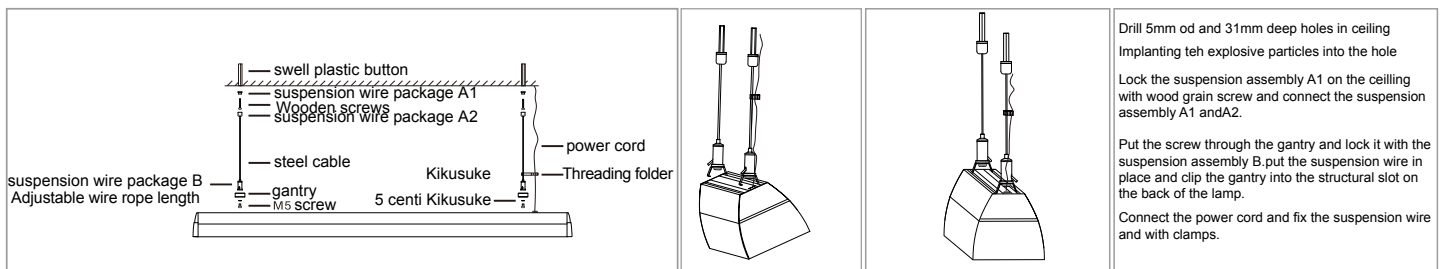
suspension wire accessories



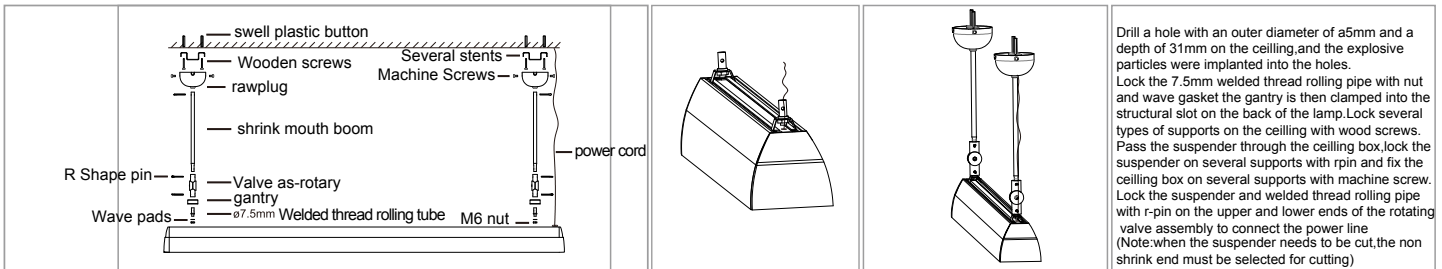
ceiling accessories

## ■ Installation:

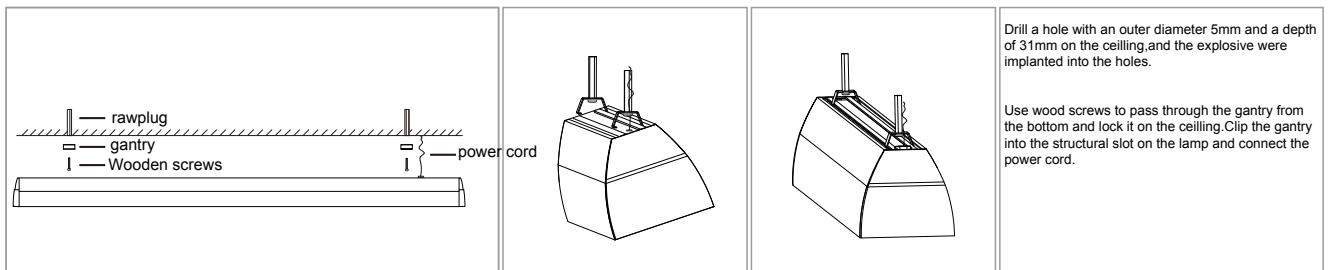
### Schematic diagram of suspended wire installation



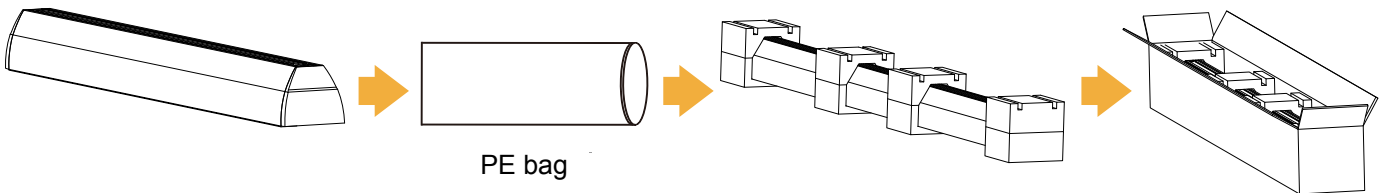
**Installation diagram of suspender type**



**Ceiling type installation diagram**



**Package Details:**



Product Dimension(mm)  
A x B x C  
1180.6x80x75

Packaging size (mm)  
**1218x123x120**

product quantity/Caton(PCS)  
1pcs